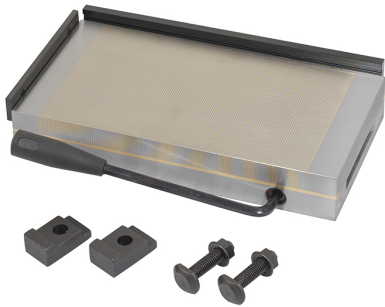


WITH FIXED POLARITY. IT ALLOWS THE MACHINING OF SMALL AND LOW THICKNESS PIECES DUE TO FINE PITCH.



Dimensions	450 x 200 x 51 mm
Magnetic force	120 N/cm ²
Pole pitch	0,5 + 1,5 mm
Net weight	38 Kg
Gross weight	40,00 kg
Packaging dimensions	515x265x120 h mm
EAN Code	8012667386733



Wooden Box



Steel