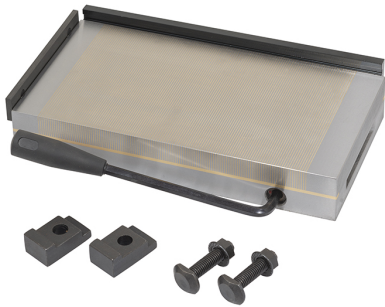


WITH FIXED POLARITY. IT ALLOWS THE MACHINING OF SMALL AND LOW THICKNESS PIECES DUE TO FINE PITCH.



Dimensions	600 x 200 x 58 mm
Magnetic force	120 N/cm ²
Pole pitch	0,5 + 1,5 mm
Net weight	55 Kg
Gross weight	53,00 kg
Packaging dimensions	665x275x135 h mm
EAN Code	8012667386757



Wooden Box



Steel