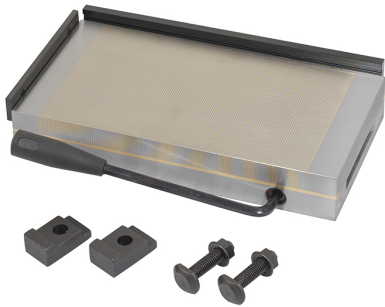


WITH FIXED POLARITY. IT ALLOWS THE MACHINING OF SMALL AND LOW THICKNESS PIECES DUE TO FINE PITCH.



| | |
|-----------------------------|-----------------------|
| Dimensions | 250 x 150 x 48 mm |
| Magnetic force | 120 N/cm ² |
| Pole pitch | 0,5 + 1,5 mm |
| Net weight | 16 Kg |
| Gross weight | 16,00 kg |
| Packaging dimensions | 315x225x125 h mm |
| EAN Code | 8012667386689 |



Wooden Box



Steel