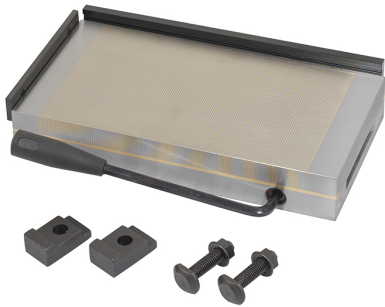


WITH FIXED POLARITY. IT ALLOWS THE MACHINING OF SMALL AND LOW THICKNESS PIECES DUE TO FINE PITCH.



<b>Dimensions</b>	350 x 150 x 48 mm
<b>Magnetic force</b>	120 N/cm <sup>2</sup>
<b>Pole pitch</b>	0,5 + 1,5 mm
<b>Net weight</b>	20 Kg
<b>Gross weight</b>	22,00 kg
<b>Packaging dimensions</b>	425x225x120 h mm
<b>EAN Code</b>	8012667386702



Wooden Box



Steel